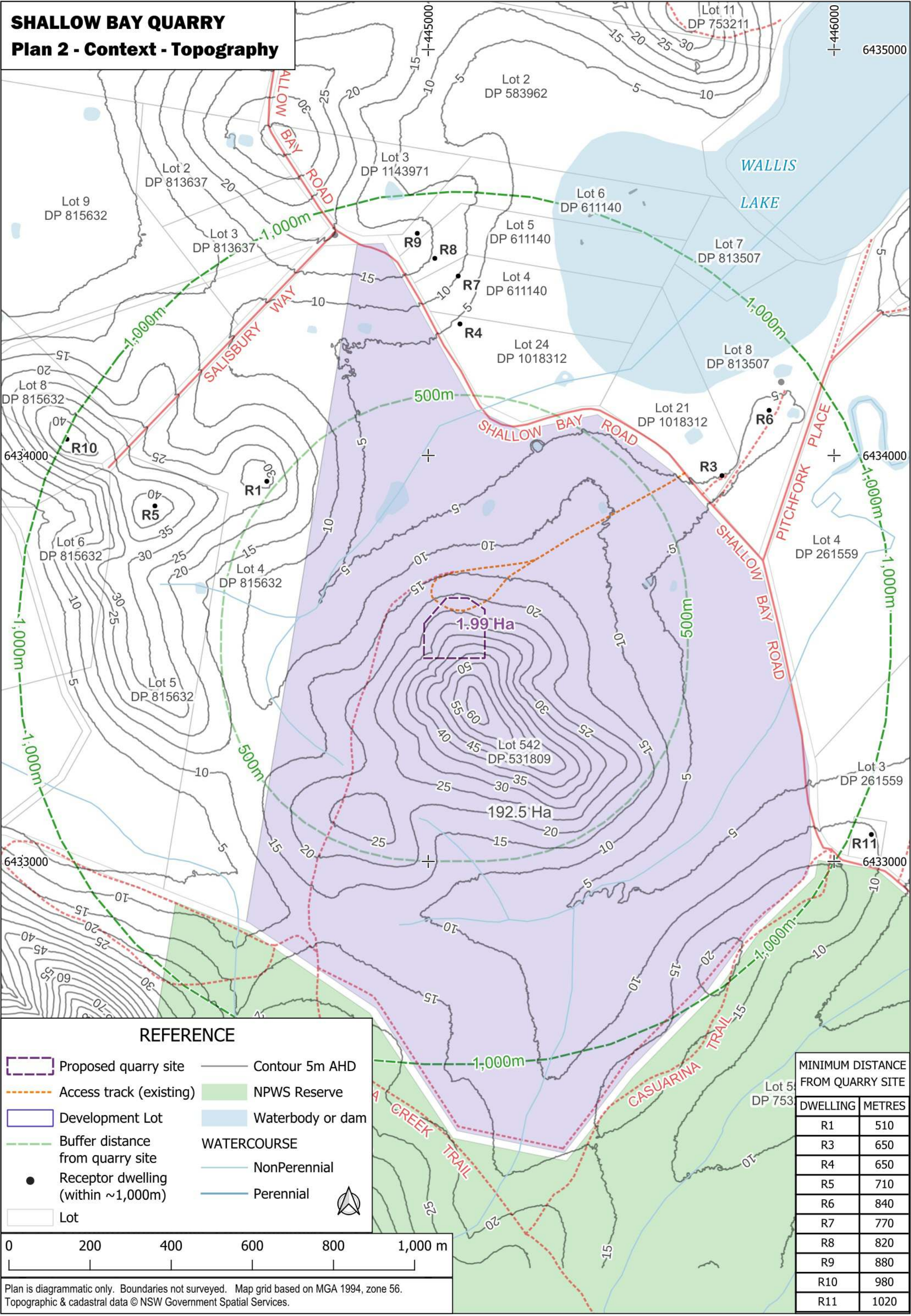


SHALLOW BAY QUARRY
Plan 1 - Context - Orthophoto



SHALLOW BAY QUARRY
Plan 2 - Context - Topography



Plan is diagrammatic only. Boundaries not surveyed. Map grid based on MGA 1994, zone 56.
Topographic & cadastral data © NSW Government Spatial Services.

SHALLOW BAY QUARRY
Plan 3 - Site - Orthophoto



REFERENCE

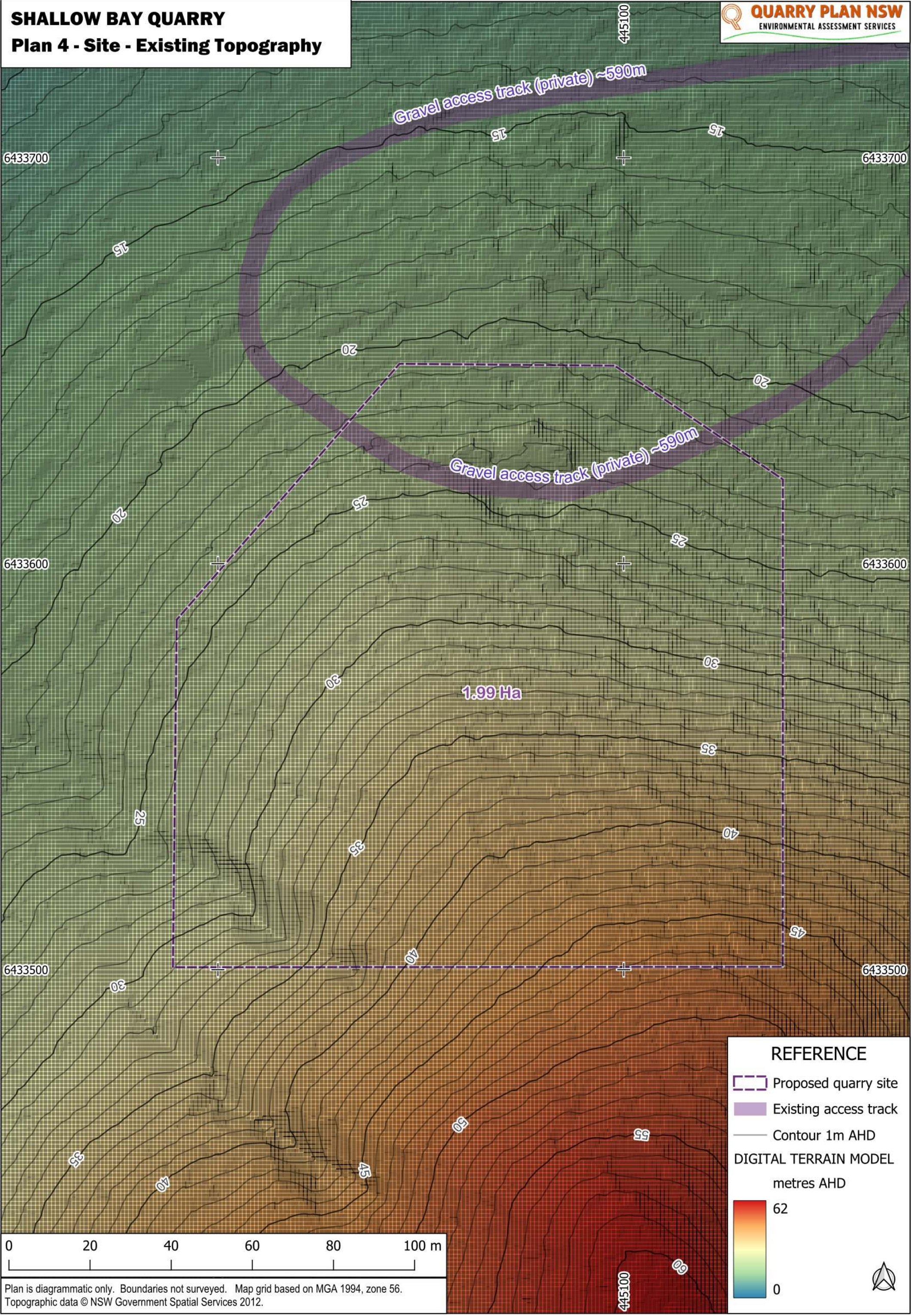
- Proposed quarry site
- Contour 5m AHD



Plan is diagrammatic only. Boundaries not surveyed.
Map grid based on MGA 1994, zone 56.
2012 topographic data © NSW Government Spatial Services.
Orthophoto from 13-1-2025 aerial drone imagery, using a dual-frequency multi-mode GNSS enabled drone with RTK corrections

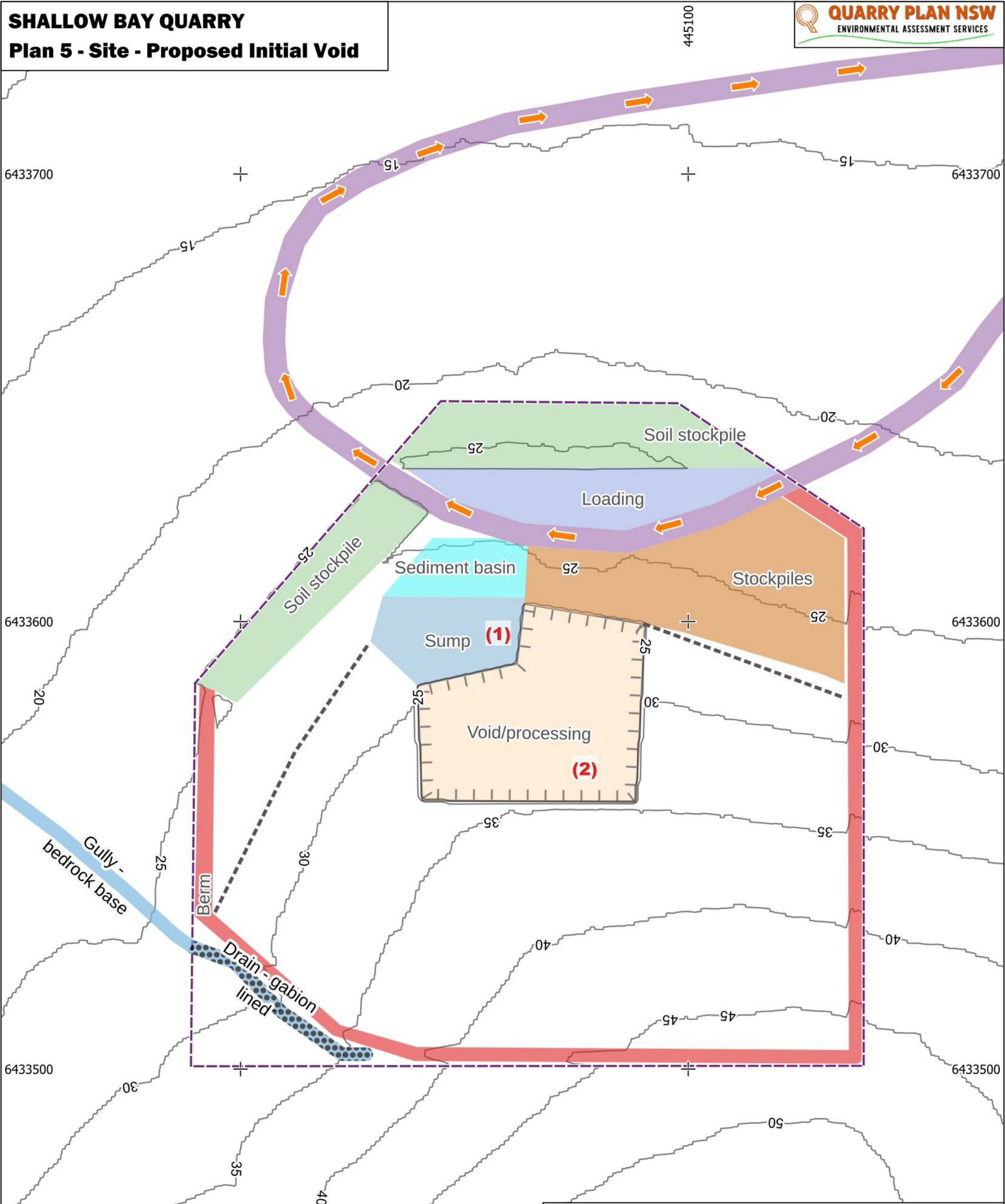


SHALLOW BAY QUARRY
Plan 4 - Site - Existing Topography



Plan is diagrammatic only. Boundaries not surveyed. Map grid based on MGA 1994, zone 56.
Topographic data © NSW Government Spatial Services 2012.

SHALLOW BAY QUARRY
Plan 5 - Site - Proposed Initial Void



NOTES:
(1) Sump to be constructed within pre-existing excavation modified to retain a minimum of 1,000m3 of dirty stormwater.
(2) Initial quarry will be ~1765m2, minimum of 5m below existing ground level (floor at 22m AHD).



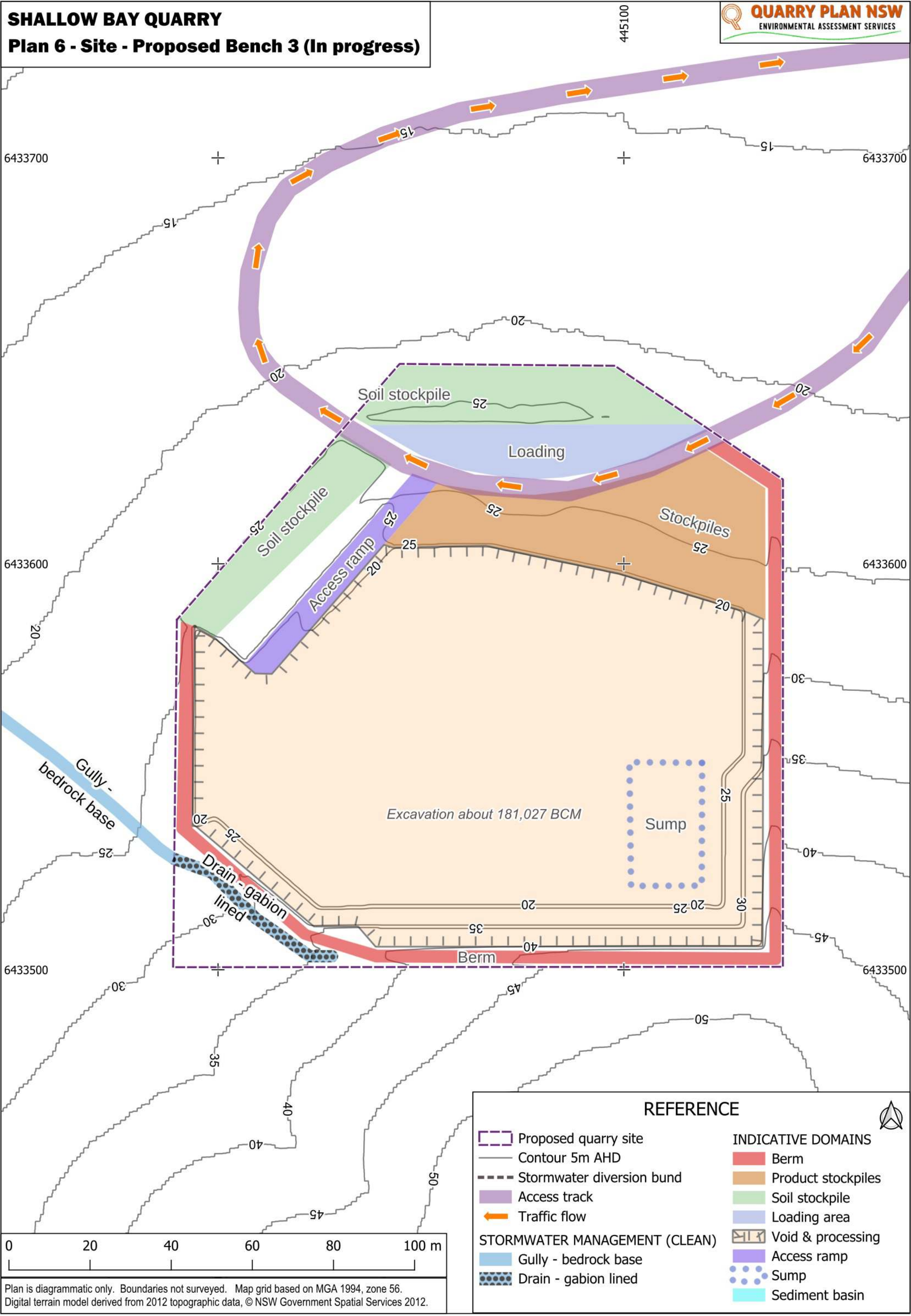
Plan is diagrammatic only. Boundaries not surveyed. Map grid based on MGA 1994, zone 56.
Digital terrain model derived from 2012 topographic data, © NSW Government Spatial Services 2012.

REFERENCE

- | | |
|---------------------------|--------------------------------------|
| INDICATIVE DOMAINS | — Contour 5m AHD |
| ■ Berm | --- Stormwater diversion bund |
| ■ Berm/bund | ■ Access track |
| ■ Soil stockpile | ➡ Traffic flow |
| ■ Loading area | STORMWATER MANAGEMENT (CLEAN) |
| ■ Void & processing | ■ Gully - bedrock base |
| ■ Sump | ■ Drain - gabion lined |
| ■ Sediment basin | |
| ■ Proposed quarry site | |

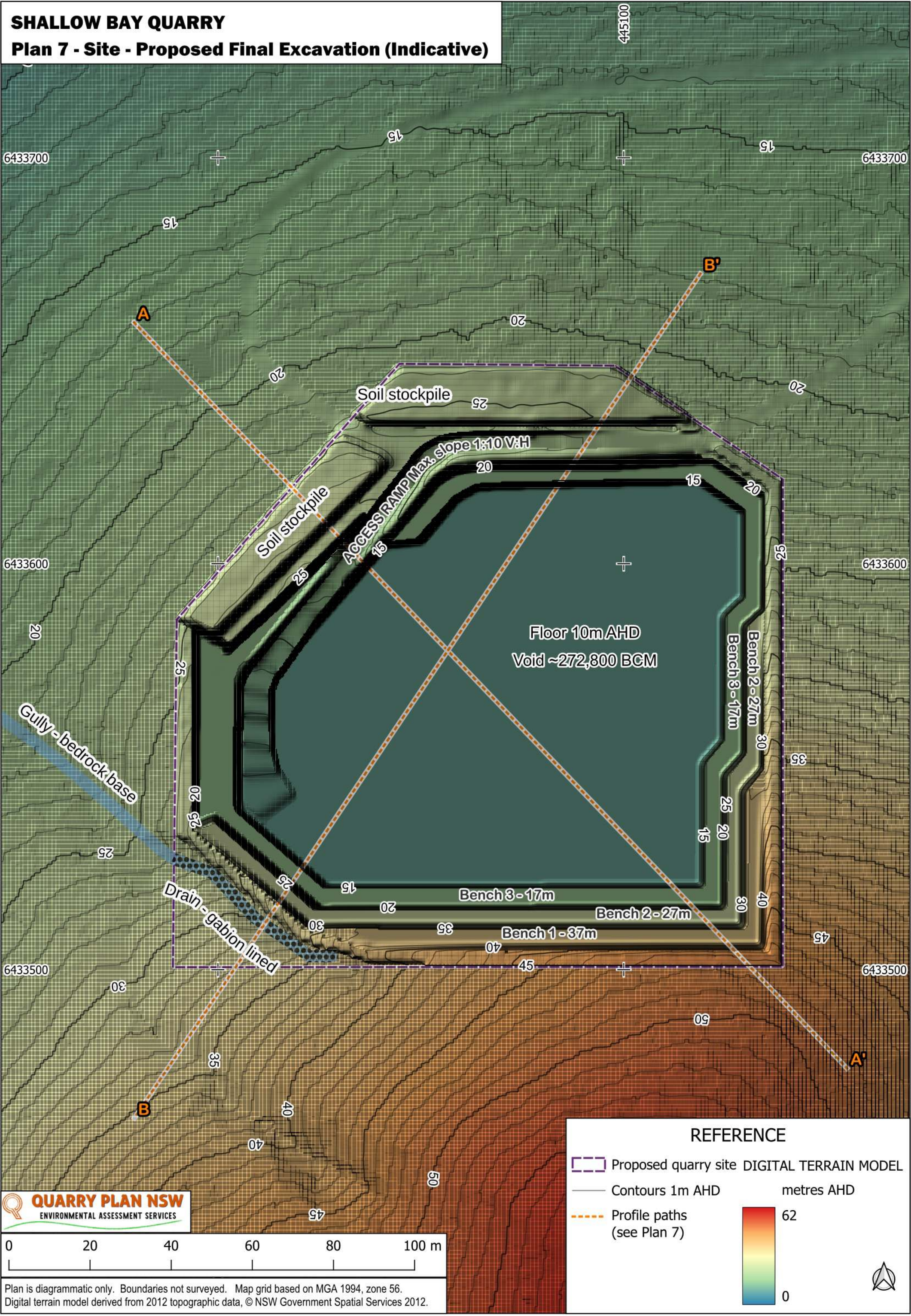


SHALLOW BAY QUARRY
Plan 6 - Site - Proposed Bench 3 (In progress)

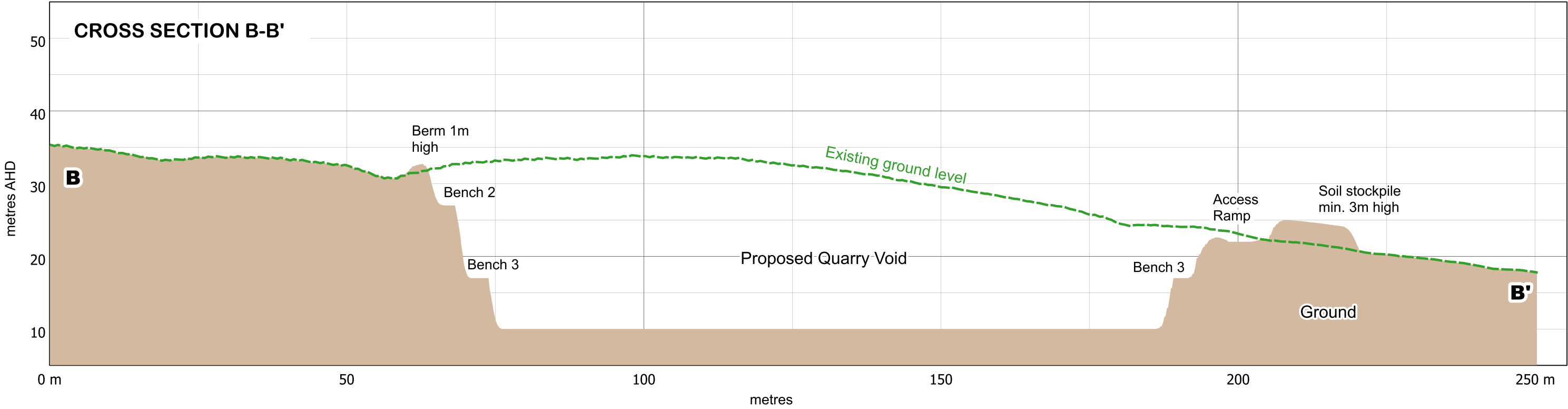
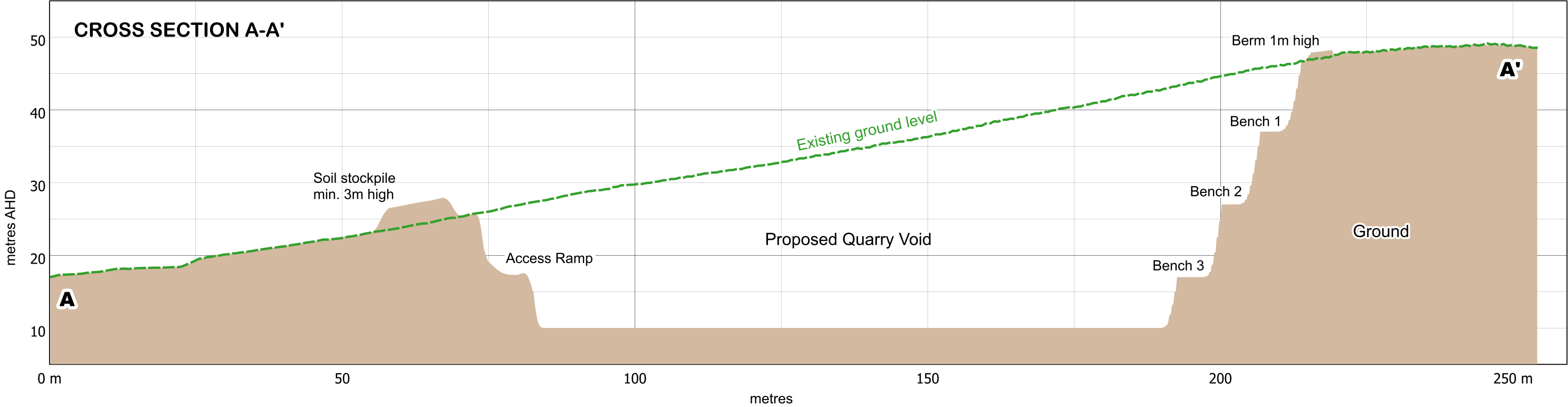


Plan is diagrammatic only. Boundaries not surveyed. Map grid based on MGA 1994, zone 56.
Digital terrain model derived from 2012 topographic data, © NSW Government Spatial Services 2012.

SHALLOW BAY QUARRY
Plan 7 - Site - Proposed Final Excavation (Indicative)

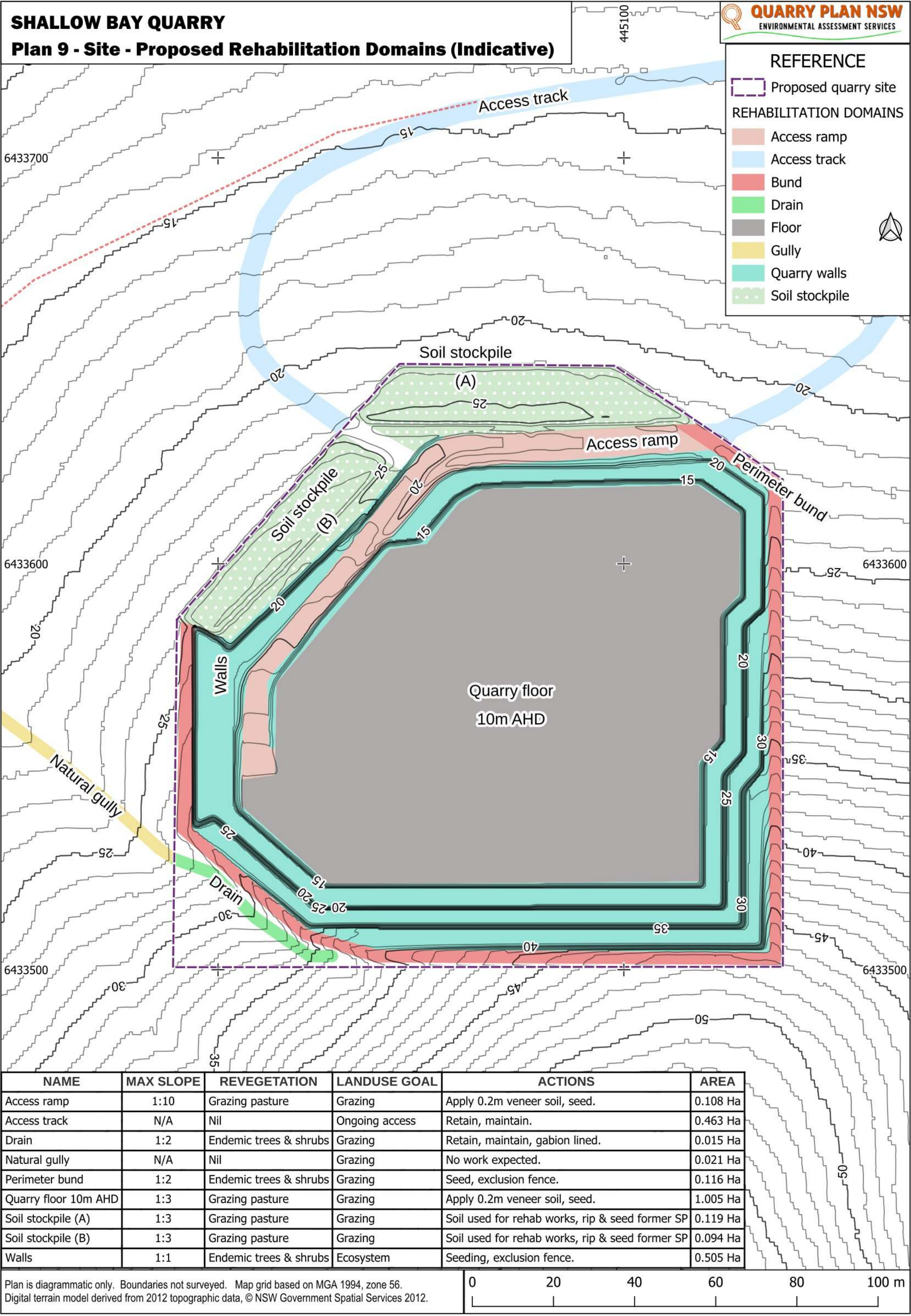


SHALLOW BAY QUARRY
Plan 8 - Final Excavation Profiles (Indicative)



SHALLOW BAY QUARRY

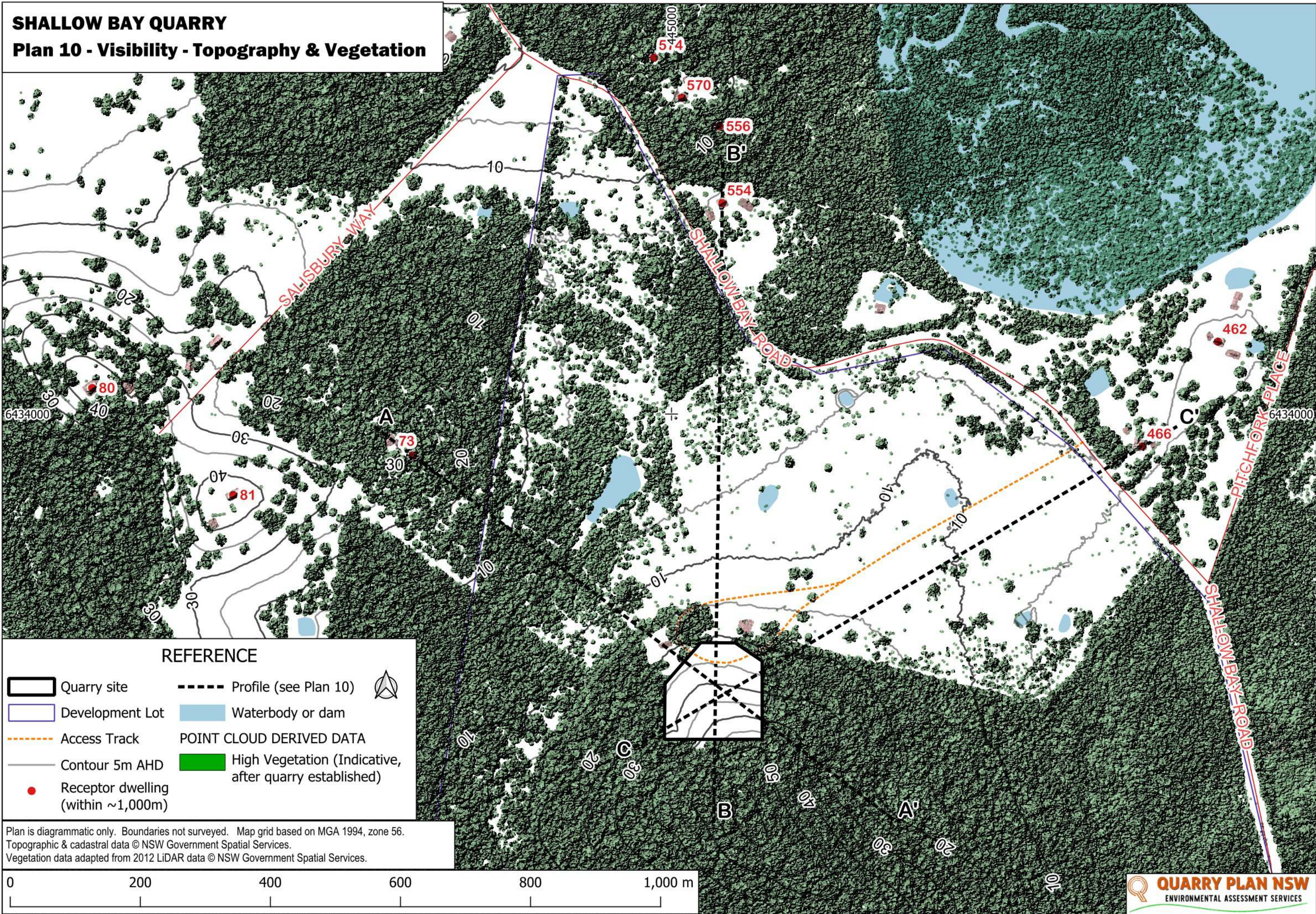
Plan 9 - Site - Proposed Rehabilitation Domains (Indicative)



NAME	MAX SLOPE	REVEGETATION	LANDUSE GOAL	ACTIONS	AREA
Access ramp	1:10	Grazing pasture	Grazing	Apply 0.2m veneer soil, seed.	0.108 Ha
Access track	N/A	Nil	Ongoing access	Retain, maintain.	0.463 Ha
Drain	1:2	Endemic trees & shrubs	Grazing	Retain, maintain, gabion lined.	0.015 Ha
Natural gully	N/A	Nil	Grazing	No work expected.	0.021 Ha
Perimeter bund	1:2	Endemic trees & shrubs	Grazing	Seed, exclusion fence.	0.116 Ha
Quarry floor 10m AHD	1:3	Grazing pasture	Grazing	Apply 0.2m veneer soil, seed.	1.005 Ha
Soil stockpile (A)	1:3	Grazing pasture	Grazing	Soil used for rehab works, rip & seed former SP	0.119 Ha
Soil stockpile (B)	1:3	Grazing pasture	Grazing	Soil used for rehab works, rip & seed former SP	0.094 Ha
Walls	1:1	Endemic trees & shrubs	Ecosystem	Seeding, exclusion fence.	0.505 Ha

Plan is diagrammatic only. Boundaries not surveyed. Map grid based on MGA 1994, zone 56. Digital terrain model derived from 2012 topographic data, © NSW Government Spatial Services 2012.

SHALLOW BAY QUARRY
Plan 10 - Visibility - Topography & Vegetation



SHALLOW BAY QUARRY
Plan 11 - Visibility Profiles (Indicative)

